

ice**GUARD**

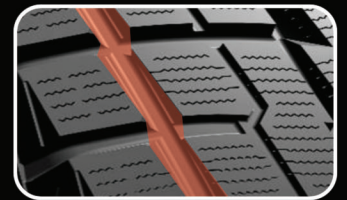
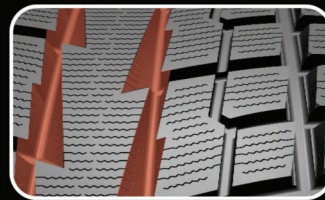
Studless **iG51v**

A Breakthrough in Winter Tire Technology for SUVs and Light Trucks

The new iG51v light truck, and SUV winter radial is the latest addition to Yokohama's iceGuard family line. Designed with the latest developments in Yokohama's winter tire technology, the iceGuard iG51v has an aggressive, performance-oriented tread pattern, making it ideal for Canadian winter driving conditions.

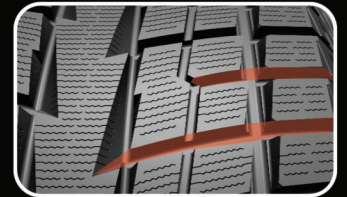
LIGHTNING GROOVES

Jagged groove edges that create more biting edges for better traction in both wet and icy conditions.



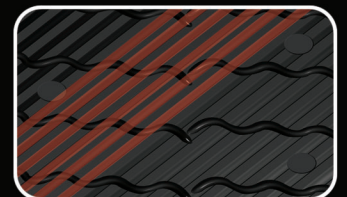
SLUSH GROOVES

Shaped so that snow, slush and water are evacuated through the surrounding grooves for improved winter control.



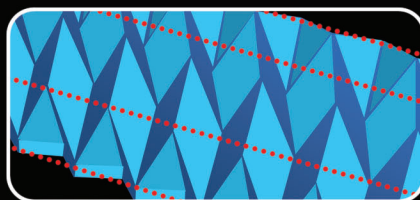
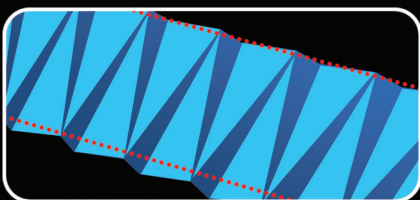
MICRO DIAGONAL GROOVES

Shallow slits that go along the initial tread surface to provide immediate traction on slippery surfaces.



3-D SIPES

Special zigzag sipes help maintain block rigidity and control by locking together and creating more biting edges for enhanced snow and ice traction.



HIGH DENSITY REINFORCED COMPOUND

A high density, reinforced compound that decreases block movement and improves consistency, dry performance and gas mileage.

